



This Issue

- WQ Officer & Chairman Reports
- Virtual Quilt Shows, Lectures, & Classes
- Call for Entries
- Neighborly Guild Calendar



WQ Quarterly Meeting Libby Williamson 3-D Fiber Arts+

Saturday, February 1st

Social Hour at 9:30, Meeting from 10am to 12
Meeting and "Quilters Showcase" at 10am,
Speaker at 11am

Hybrid Meeting Join us in Person or on Zoom
Sewing Arts Center
2306 Corinth Ave., Los Angeles, CA 90064



Upcoming Workshops & More



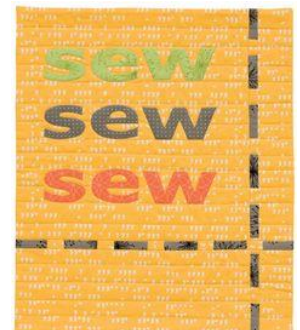
- **Saturday, January 4, 2025.** Sew In + Share Your Favorite Notions – (see page 3)
- **Saturday, February 1st** Libby Williamson will be presenting her amazing lecture 3-D Quilts at our February WQ Quarterly Meeting.
- **Libby** will lead a workshop on **Saturday, February 8th** – Enhance the Vase. We will be at the West Traffic Community Room for Libby's class. Set up at 9, class 9:30 - Clean-up and out by 4.
- Save the Date! **Cathy Perlmutter** will be teaching Scrap Cities, a three-hour workshop on Saturday, **April 12th** (see page 4)



National Hobby Month

January

"National Day" pictures are actual quilts.



PRESIDENT'S MESSAGE

On to 2025

Happy New Year! Another year begins and Westside Quilters has plans for 2025.






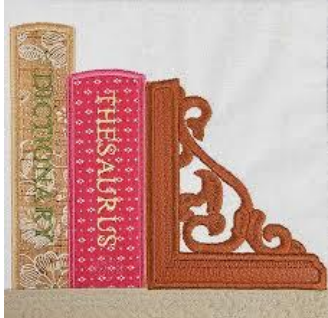
Sew-ins on Saturdays in January, March and June with bonus demonstrations. Libby Williamson will be joining us on February 1 for the Quarterly meeting and a workshop, "Embrace the Vase", the following week. A workshop with Cathy Perlmutter on April 12 ("Scrap Cities") and the Quarterly meeting on May 3 will feature a lecture from Jamie Davis on Baltimore Album quilts. And this is just the first half of the year - much more to come! I hope to see you at one or more of these.



I've decided to get more organized this year with my works-in-progress. The first thing to do is find them, make a list, and probably be shocked at how many there are! But I am determined to look at them, decide if I want to actually finish them or not and go from there. I will let you know how it goes in a few months. Maybe I'll even weed through my stash too - yeah, right. Well, January *is* the time to set goals!

Everyone, enjoy the last of the holidays! And Road to California is coming up the week of the 20th with lots of quilts to see.

Terrie Dorio
WQ President

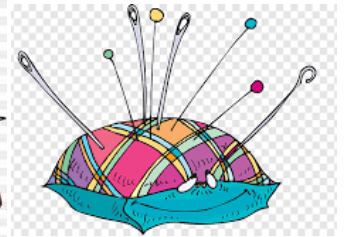
<p><u>National Puzzle Day</u> January 29th</p> 	<p><u>National Daisy Day</u> January 28th</p> 	<p><u>National Chocolate Cake Day</u> January 27th</p> 
<p><u>National Science Fiction Day</u> January 2nd</p> 	<p><u>National Popcorn Day</u> January 19th</p> 	<p><u>National Thesaurus Day</u> January 18th</p> 

Sew - In + Share Your Favorite Notions

Saturday, January 4, 2025.

10am – 3pm
Sewing Arts Center

*Have a favorite Notion?
Bring it and share why you
like it.*



What is your favorite notion?

Come and share at our first Sew-In on Saturday, January 4, 2025 at Sewing Arts Center, 2306 Corinth Ave., LA, 90064, 10:00 A.M. – 3:00 P.M. Masks mandatory.

The store is closed, and the classroom is open just for us. We will set up tea and coffee service outside on the patio. Bring your lunch or enjoy any of the restaurants within walking distance of Sewing Arts. Bring your machine or hand sewing, just time to share in the sisterhood of quilting.

Happy New Year!

Pat



National Hat Day January 15th



National Dress Up Your Pet Day January 14th



Boston Tea Party Anniversary January 1st





Libby Williamson
Embrace the Vase

Saturday, February 8

Class 9:30 -3? Clean-up and out by 4

Los Angeles Police West Traffic Division, Community Room
4849 Venice Blvd., Los Angeles

Fee: \$80, \$90 for non-members (Early Bird rate of \$70, ends January 11)
\$35 Materials Fee payable at the workshop (includes all fabrics &) materials

WQ Programs.....

Libby Williamson will be presenting her amazing lecture 3-D Quilts at our February 1st meeting and lead a wonderful workshop on February 8th.

Start the New Year with something new and create lovely floral arrangements with free-motion stitching and paint at our next workshop, **Embrace the Vase** with Libby Williamson, Saturday, February 8. [Click Here](#) to sign up now to get the **Early Bird rate of \$70**. Please note that the **Early Bird rate ends January 11**. You may also make your payment to Westside Quilters on Zelle.



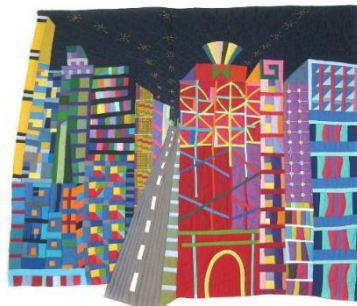
All fabrics and materials for your vase will be provided in class. All you need to bring is: Fabric scissors, an art apron or paint shirt, and your sewing machine. Optional: Any special bits of fabric or trims which you'd like to incorporate into your work.



Save the Date! [Cathy Perlmutter](#) will be teaching **Scrap Cities**, a three-hour workshop on Saturday, April 12.

Check out our [website](#) to see all our 2025 programs!

Committee Members Needed! I cannot do this job alone. I cannot emphasize this enough. Please consider volunteering to be on the Programs Committee. It's a great way to bring in speakers and workshops that you are interested in. Plus, committee meetings will be followed with wine and lunch.



Kathryn Pellman, Programs Chairperson

Treasurer

Karynn Dittmar, Treasurer

OPENING BALANCE AS OF 5/25/24		5383.14
INCOME		
Membership Dues / Donations	2335.00	
Workshop Fees	1465.00	
Guest Fees	0.00	
Fabric Sale Fundraiser	0.00	
TOTAL INCOME		3800.00
EXPENSES		
Workshop Expense	751.30	
General Meeting Expense	900.00	
Charitable Contributions	0.00	
Bank Adjustment	0.00	
Administrative Expenses	0.00	
Membership Expenses	50.00	
SCCQG Insurance	328.25	
Website	269.93	
PO Box Rental	256.00	
Philanthropy / Ed. Expense	0.00	
Printing / Promotion / Admin.	0.00	
Square Up/Pay Pal Fees	42.92	
Government Fees	45.00	
TOTAL EXPENSE		2643.40
NET INCOME		1156.60
CLOSING BALANCE as of 11/24/24		6539.74

National Strawberry
Ice Cream Day
January 15th



Website and Social Media:

A few photos from the November Philanthropy workshop have been posted to the photos page on the WQ website at www.westsidequilterslosangeles.org.

And... all the details for the Libby Williamson workshop on February 8 are posted on the Home page and on the Calendar page. You can now sign up directly using Paypal from the link provided.

Sally Wright. Website and Social Media Manager



Carolle Schuegraf January 4
Florann Ramsey January 14
Sally Wright January 30
Luann Jaffe January 31



Calls for Entry January 2025

So happy to hear that both our members Carollee Schuegraf and Debbie Nussbaum have had quilts juried into Road to California this month! You don't have a chance if you don't enter! The Houston 2025 entries are up... see below.

Continuing our notifications for ways to display your quilts and textile pieces to a wider audience...For some great information from a veteran on how to get your work shown see this blog entry from Sue Bleiweiss <https://suebleiweiss.blog/2018/06/14/getting-your-work-out-there/>

I also recommend this blog post from Lyric Kinard on how to choose venues to display your work - <https://lyrickinard.com/2019/05/showing-your-work-choosing-venues/>

Here are some suggestions for quilt entry photography from International Quilt Festival.

PHOTOGRAPHING YOUR QUILT FOR SUBMISSION

- Having a great photo of your quilt - straight on, in focus, not on a bed or held up showing hands and feet, super important. There is lots of great info on quilt photography on line. Google!

Entering shows is not difficult, but to begin here are a few guidelines:

- Always make sure you read everything in the call including the calendar, requirements, rules, etc.
- Especially the rules! Will save headaches and disappointment later on.
- Keep a record on your entries so you won't be caught with a quilt needing to go two places at once. Having to remove a quilt from a show or exhibit because you misread the exhibition dates is a no-no. Ask me how I know...
- Don't be intimidated or depressed by a rejection! There are lots of different reasons why a quilt doesn't fit into a specific show. It is usually not because your quilt is bad!

The calls below are just a sample of the many opportunities out there. For more search "Fiber Art Calls for Entry" or "Quilt Calls for Entry"

Here are some calls...

New Quilts From an Old Favorite - National Quilt Museum, Paducah, KY.

<https://quiltmuseum.org/nqof/>

This international contest & exhibition organized by the National Quilt Museum challenges quiltmakers to create an innovative quilt based on a specific traditional pattern. Winners of the contest traditionally include quilts from many different U.S. states and several other countries. Quilts are selected for their excellence in design and techniques, their innovation, and their contributions to an exhibit showing the wide range of designs and styles the selected traditional pattern can inspire.

NEW QUILTS FROM AN OLD FAVORITE 2026: FOOD The 2026 theme is Food! The quilt must be about food in some recognizable way and include an interpretation of a traditional block pattern of your choosing. All quilts must be original designs.

Entry deadline: January 14, 2025

Fiber Reimagined II

Call for Entry: February 1- March 10, 2025

This popular exhibition returns for its third year. Enter your innovative contemporary art created from fiber and recycled and repurposed mixed media. All submissions must include a fiber material or textile technique. The exhibition will be juried by the Fiber Art Now creative team and will be featured in the Summer 2025 issue of Fiber Art Now. Selections from the print exhibition will be eligible for the on-site

exhibition at the [Guilford Art Center](#), in Guilford, Connecticut, July 1 through July 27, 2025
<https://www.fiberartnow.net/calls/>
Entries open February 1 and close March 10

Mid-Atlantic Quilt Festival 2025 Quilt Competition

Quilt Competitions <https://www.quiltfest.com/register/mid-atlantic-quilt-festival-2025/maqf-2025-quilt-competition/>

- Innovative & Traditional Full-Size Quilts
- Mid-Century Mod Modern Quilts
- Wall Quilts

Quilts may be entered in the full-size Innovative/Traditional Quilt Competition, the Mid-Century Mod Modern Quilt Competition, or the Wall Quilt Competition.

Entry deadline January 21, 2024

Sacred Threads Call for Entry:

Sacred Threads is excited to announce our call for entry for the 2025 Sacred Thread Exhibit in Indianapolis AND its Preview Travel Exhibit. The Preview Travel Exhibit will debut in Houston at the 2024 International Quilt Festival and then continue to travel throughout the summer of 2027. All pieces in the Preview Travel Exhibit will be shown at the main exhibit in Indianapolis.

As Sacred Threads transitions to a new team and location, we want to maintain the momentum of our travel exhibit and other venue opportunities. Therefore, our 2025 Travel Exhibit will debut before the main Indianapolis Exhibit.

We will open the call for entries in January of 2024.

Entry Deadline – January 10, 2025.

For More Information: Questions regarding exhibit: Barb Triscari betoncat@betoncat.com or Lisa Ellis lisa@ellisquilts.com.

Indiana Heritage Quilt Show

[Indiana Heritage Quilt Show \(ihqs.org\)](http://ihqs.org)

March, 2025

Entry Deadline February 10, 2025

AQS Quilt Week - Grand Rapids, August 20-23, 2025

[American Quilter's Society - AQS Quilt Contests](#)

Entry Deadline March 27, 2025

And for Houston 2025 - Deadlines are all in April, 2025

<https://www.quilts.com/enter-your-quilt/>

CELEBRATE LIFE

Art is an excellent way to express emotions. For this exhibit, artists depict how they, a family member, or a friend celebrated a loved one's wedding, birth, birthday, or memorial. Colors, patterns, traditional blocks, or abstract drawings can be combined or used alone to convey a range of emotions from happy to sad.

How to Enter Your Quilt:

- Limit of two (2) entries per person
- There is an entry fee of \$20 (USD) per quilt
- Registration closes on April 16, 2025
- Size: a minimum of 24", maximum of 90" on any side

- There is no “made-by” date requirement

FINE FEATHERED QUILTS

This exhibit will showcase Princess Feather and Feathered Star quilts. Quilters have long associated feathers with the 19th and 20th Centuries. Modern sewing methods and machines make quick work of these two cherished designs. You may enter antique, modern, recently made, inherited, or purchased quilts in these two styles.

How to Enter Your Quilt:

- Limit of two (2) entries per person
- There is an entry fee of \$20 (USD) per quilt
- Registration closes on April 24, 2025
- Size: a minimum of 50 “, maximum of 108” on any side
- There is no “made-by” date requirement

HANDS ALL AROUND

Artists from around the world incorporate influences from their own cultures into the design and technique of their quilts. This prestigious, long-running international showcase includes recent quilts by some of these international artists.

How to Enter Your Quilt:

- Limit of two (2) entries per person.
- There is an entry fee of \$20 (USD) per quilt
- Registration closes on April 3, 2025
- Size: a minimum of 24”, maximum of 90” on any side
- The piece must be completed between 2022 and 2025

IN FULL BLOOM

Just as quilters create beautiful art with fabric, florists and gardeners cultivate works of beauty from the soil. This exhibit showcases floral-inspired quilts from across the spectrum in lush color and splendor.

How to Enter Your Quilt:

- Limit of two (2) entries per person
- There is an entry fee of \$20 (USD) per quilt
- Registration closes on April 24, 2025
- Size: a minimum of 24”, maximum of 90” on any side
- The piece must be completed between 2022 and 2025

IN THE AMERICAN TRADITION

Contemporary quiltmakers often look to the art form’s rich tradition and history for inspiration in their own work. This exhibit features recently made quilts incorporating traditional blocks, styles, and/or techniques.

How to Enter Your Quilt:

- Limit of two (2) entries per person
- There is an entry fee of \$20 (USD) per quilt
- Registration closes on April 3, 2025
- Size: a minimum of 36”, maximum of 108” on any side
- There is no “made-by” date requirement

LANDSCAPE QUILTS

From valleys and volcanoes to mountains and monuments, landscapes often inspire artists, including many in the quilt world. This exhibit showcases many stunning geographical wonders.

How to Enter Your Quilt:

- Limit of two (2) entries per person
- There is an entry fee of \$20 (USD) per quilt
- Registration closes on April 16, 2025
- Size: a minimum of 24", maximum of 90" on any side
- The piece must be completed between 2022 and 2025

MODERN QUILTS—A TWIST IN TRADITION

Modern quilts often take traditional blocks and reinterpret them by using solid-colored fabrics or give them a new twist by using negative space, minimal repeats, improvisational piecing, and gridding for quilting. A modern quilt can be pieced or appliquéd.

How to Enter Your Quilt:

- Limit of two (2) entries per person
- There is an entry fee of \$20 (USD) per quilt
- Registration closes on April 3, 2025
- Size: a minimum of 36", maximum of 90" on any side
- There is no "made-by" date requirement

READING AND REMEMBRANCE: A TRIBUTE TO BARBARA BUSH

For over a decade, the Barbara Bush Literacy Foundation has made a difference in the lives of children and adults by giving them the tools they need to become proficient readers. Use your creativity to make a quilt that illustrates a favorite book, tells a story of its own, or encourages someone to read. You can even depict Barbara Bush herself!

[For official photos of Mrs. Bush from the Barbara Bush Foundation, download here »](#)

How to Enter Your Quilt:

- Limit of two (2) entries per person
- There is an entry fee of \$20 (USD) per quilt
- Registration closes on April 24, 2025
- Size: a minimum of 40", maximum of 60" on any side
- The piece must be completed between 2021 and 2025
- The quilt may illustrate a children's story or an aspect of Mrs. Bush's life

TACTILE ARCHITECTURE™

Buildings have a long history of inspiring the creative designs of quiltmakers. In the 19th century, American quilters developed classic architectural blocks and patterns such as Log Cabin, Schoolhouse, and Brick Wall. This annual juried exhibit challenges quiltmakers to create works based on architectural themes and inspirations. The quilt style may be traditional, modern, or art.

How to Enter Your Quilt:

- Limit of two (2) entries per person
- There is an entry fee of \$20 (USD) per quilt
- The call closes on April 16, 2025
- Size: a minimum of 24", maximum of 90" on any side.
- The piece must be completed between 2022 and 2025

Questions?

Sally Wright sally@sallywrightquilts.com



Philanthropy...

We hope you are all enjoying the holidays. Nothing new to report from Philanthropy since our deliveries at the end of the year. Have you had any time for quilting during this season? I haven't but hope to get started again soon. We hope to see you at the Sew in on Saturday, January 4th so we can get more quilts in the near future.

Happy New Year.

Luann, Virginia and Roberta

At Home and Surfing the Internet & some venturing out

“Blue Gold: The Art and Science of Indigo” at the Mingei Museum in Santa Diego’s Balboa Park. It will be there until mid-March 2025, 10am to 5pm.

Member News.....

For Sale: Horn Sewing Cabinet and 5 drawer caddy \$375

- Closed: 60” wide and 19 ½” deep
- If open back drop-down flap, it is 39” deep
- With extension that goes on top drawer, it is 55” deep
- Opening for machine is 24” wide x 12 ½”
- Included is 5 drawer caddy that fits perfectly!
- It is white with wood trim and is in great shape.

I am replacing it only because my new machine is too large for it.

Please email me if interested: sandralauterbachstudio@gmail.com

Sandra E. Lauterbach



National Lego Day
January 28th



National Bean Day
January 6th



National Ribbon Skirt Day
January 4th





A NEIGHBORLY GUILD CALENDAR

January 2025	
January 4 Westside Quilters www.WestsideQuiltersLosAngeles.org	<u>Sew-In + Share Your Favorite Notions</u>
January 8 Santa Monica Quilt Guild www.santamonicaquiltguild.org	<u>Nova Montgomery</u> Lecture: "A Century of Progress: the 1933 World Fair"
January 9 Glendale Quilt Guild www.glendalequiltingguild.org	<u>Meeting</u>
January 12 & 13 LA Modern Quilt Guild www.LAMQG.org	<u>Allie McCathren</u> Lecture: Workshop: Seaglass
January 13 San Fernando Valley Quilt Guild www.sfvqg.net	<u>Joan de Young</u> Lecture: "What the Heck is Fiber Art?"
January 15 African American Quilters of Los Angeles www.easysite.com/aaqla	<u>Meeting</u> – third Sunday of the month
January 28 South Bay Quilters Guild www.southbayquiltersguild.org	<u>Ann Turley</u> Lecture: Confessions of the Quilt Police - <i>What goes on behind the closed doors of judging at quilt shows</i>
February 2025	
February 5 Santa Monica Quilt Guild www.santamonicaquiltguild.org	<u>Sarah Goer</u> Lecture: "Developing a Creative 100 Day Project"
December 7 Westside Quilters www.WestsideQuiltersLosAngeles.org	<u>Libby Williamson</u> Lecture: 3-D Quilts.
February 10 LA Modern Quilt Guild www.LAMQG.org	<u>Meeting</u>
February 10 San Fernando Valley Quilt Guild www.sfvqg.net	<u>Alex (Bea) Byrne</u> Lecture: "Kick Out the Inner Critic & Make It!"
February 13 Glendale Quilt Guild www.glendalequiltingguild.org	<u>Meeting</u>
February 22 & 23 South Bay Quilters Guild www.southbayquiltersguild.org	Quilt Show 2025 - Our Quilt Garden
February ?? Simi Valley Quilt Guild www.simivalleyquiltguild.org	<u>TBD</u>

Benjamin Franklin
Day
Jan. 17th



National Bloody Mary Day
January 1st



World Typing Day
January 8th



Editor's Note...

Well, third time is the charm, or so they say. In my case, it is!!! My quilt "Clivia in Full Bloom" was accepted to Road2CA!!! I think I dotted all the "i's" and crossed all the "t's" with my application paperwork and the mailing instruction protocol (which is intensive), so somewhere among all the entries my explosion of orange blossoms and wafting green leaves will be displayed at Road2CA. I'm both honored and delighted to have been selected.

I will share a picture of my quilt in the February WQ Newsletter, for those who will not be attending the Road2CA show. For now, it will remain a secret!

Happy stitching.....

Debbie Nussbaum
Westside Quilters Newsletter Editor

<p><u>Penguin Awareness Day</u> January 20th</p> 	<p><u>Epiphany</u> January 6th</p> 	<p><u>National Bagel Day</u> January 15th</p> 
<p><u>National Bubble Bath Day</u> January 8th</p> 	<p><u>National Bird Day</u> January 5th</p> 	<p><u>National Bubble Wrap</u> <u>Appreciation Day</u> January 27th</p> 
<p><u>Roe V. Wade</u> January 22nd</p> 	<p><u>World Snow Day</u> January 19th</p> 	<p><u>National Hot Chocolate Day</u> January 31st</p> 

Next Executive Board Meeting

The next meeting of the Executive Board will be held, January 18, 2025
 All members of Westside Quilters are welcome to attend with prior notice to
Pres@WestsideQuiltersLosAngeles.org.

<p><i>Our Mission</i> A new kind of guild organized for educational and charitable purposes; to promote cooperation and the exchange of ideas among quilters; to instruct members in methods and techniques of traditional and contemporary creative quilting; to serve mini-groups and their philanthropic endeavors within the community; to inspire personal achievement.</p> <p>Officers 2022-2023</p> <table style="width: 100%; border: none;"> <tr><td style="padding-left: 20px;">President</td><td>Terrie Dorio</td></tr> <tr><td style="padding-left: 20px;">Vice President</td><td>Pat Karasick</td></tr> <tr><td style="padding-left: 20px;">Secretary</td><td>Sonja Daniel</td></tr> <tr><td style="padding-left: 20px;">Treasurer</td><td>Karynn Dittmar</td></tr> <tr><td style="padding-left: 20px;">Program</td><td>Kathryn Pellman + more</td></tr> <tr><td style="padding-left: 20px;">Membership</td><td>Lisa Drew</td></tr> <tr><td style="padding-left: 20px;">Newsletter</td><td>Debbie Nussbaum</td></tr> <tr><td style="padding-left: 20px;">Philanthropy</td><td>Roberta Walley, Virginia Marshall, and Luann Jaffe</td></tr> <tr><td style="padding-left: 20px;">Website Manager</td><td>Sally Wright</td></tr> </table> <p>Appointed Positions</p> <table style="width: 100%; border: none;"> <tr><td style="padding-left: 20px;">Hospitality</td><td></td></tr> <tr><td style="padding-left: 20px;">Meeting Set-Up/Take-Down</td><td>Anata Withrington and Prima Casetta</td></tr> <tr><td style="padding-left: 20px;">Photographer</td><td>Everyone</td></tr> <tr><td style="padding-left: 20px;">President Emeritus</td><td>Sally Wright</td></tr> </table> <p>Mailing Address</p> <table style="width: 100%; border: none;"> <tr><td style="padding-left: 20px;">Post Office Box 641925</td></tr> <tr><td style="padding-left: 20px;">Los Angeles, CA 90064</td></tr> </table>	President	Terrie Dorio	Vice President	Pat Karasick	Secretary	Sonja Daniel	Treasurer	Karynn Dittmar	Program	Kathryn Pellman + more	Membership	Lisa Drew	Newsletter	Debbie Nussbaum	Philanthropy	Roberta Walley, Virginia Marshall, and Luann Jaffe	Website Manager	Sally Wright	Hospitality		Meeting Set-Up/Take-Down	Anata Withrington and Prima Casetta	Photographer	Everyone	President Emeritus	Sally Wright	Post Office Box 641925	Los Angeles, CA 90064	<p>Website www.WestsideQuiltersLosAngeles.org</p> <p>Facebook We're on Facebook. Check out the banner on the WQ website home page (lower center).</p> <p>iGive.com This is another way to benefit WQ when shopping on the Internet. Here you need to register (the iGive.com logo appears in the lower center on the WQ website home page and links you directly to iGive.com). More than 800 Internet retailers participate (Barnes & Noble, Bed Bath & Beyond, Enterprise Rent-A-Car, Lancome -- to name a few). Follow the instructions at iGive.com.</p> <p>Non-Profit Status Westside Quilters is tax-exempt from Federal income tax under section 501(c)(3) of the Internal Revenue Code, and classified as a public charity under section 170 of the Code, according to the determination letter dated May 26, 2011 received from the Internal Revenue Service. The effective date of exemption is June 17, 2010. Donations to Westside Quilters are fully tax-deductible for individuals and other entities such as corporations, partnerships, trusts; Westside Quilters is qualified to accept tax deductible bequests and gifts or transfers of gifts.</p> <p>F.E.I.N. 27-3145733 (Federal Employer Identification Number)</p>
President	Terrie Dorio																												
Vice President	Pat Karasick																												
Secretary	Sonja Daniel																												
Treasurer	Karynn Dittmar																												
Program	Kathryn Pellman + more																												
Membership	Lisa Drew																												
Newsletter	Debbie Nussbaum																												
Philanthropy	Roberta Walley, Virginia Marshall, and Luann Jaffe																												
Website Manager	Sally Wright																												
Hospitality																													
Meeting Set-Up/Take-Down	Anata Withrington and Prima Casetta																												
Photographer	Everyone																												
President Emeritus	Sally Wright																												
Post Office Box 641925																													
Los Angeles, CA 90064																													



.....Happy New Year 2025.....

